

S108 BOX-C9

1	2	3	4	5	6	7	8	9	FREQ
1	1	1	0	0	0	X	1	1	20
1	1	0	0	1	X	0	1	24	
0	1	0	0	X	1	1	0	28	
1	1	0	1	1	X	1	1	30	
1	1	0	1	1	X	0	1	36	
0	1	0	0	0	X	0	1	38	
0	1	0	1	1	X	1	1	42	
1	0	1	0	0	X	1	0	44	
0	1	0	1	1	X	0	1	56	
1	0	1	0	0	X	0	1	68	
1	0	0	1	1	X	0	1	102	
0	0	1	0	1	X	1	0	120	
0	0	1	0	1	X	0	0	180	
X	X	X	1	X	X	X	X	FLAT	

HI FREQUENCY ROLL-OFF

S109	123456	-3dB FREQ.
000000	1	10KHZ
100100	2	15KHZ
010010	3	20KHZ
110110	4	30KHZ
001001	5	40KHZ
101101	6	50KHZ
011011	7	60KHZ
111111	8	80KHZ

HORN-EG

S109	1	+3dB FREQ.
111	1	1.5KHZ
011	2	2.5KHZ
101	3	4.5KHZ
110	4	8.5KHZ
010	5	15.5KHZ
100	6	30.5KHZ
000	7	FLAT

S100-S103 LOW PASS CUTOFF

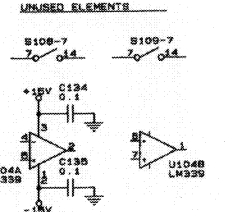
1	2	3	4	5	6	7	8	FREQ (HZ)
1	1	1	1	1	1	1	1	20,000
0	1	1	1	1	1	1	1	15,000
1	0	1	1	1	1	1	1	12,300
0	0	1	1	1	1	1	1	10,800
1	1	0	1	1	1	1	1	8,000
1	1	1	0	1	1	1	1	4,000
1	1	1	1	0	1	1	1	1,800
1	1	1	1	1	0	1	1	750
1	1	1	1	1	1	0	1	300
0	0	0	0	0	0	0	1	100
0	0	0	0	0	0	0	0	80

S104-S107 HIGH PASS CUTOFF

1	2	3	4	5	6	7	8	FREQ (HZ)
1	1	1	1	1	1	1	1	12,000
0	1	1	1	1	1	1	1	8,700
1	0	1	1	1	1	1	1	5,000
0	0	1	1	1	1	1	1	3,400
1	1	0	1	1	1	1	1	1,500
1	1	1	0	1	1	1	1	625
1	1	1	1	0	1	1	1	200
0	1	0	0	0	1	1	1	150
1	1	1	1	1	0	1	1	83
0	0	1	0	0	0	1	1	55
1	1	1	1	1	1	0	1	40
0	0	0	0	0	0	0	1	23

- NOTES:**
- ALL RESISTORS ARE IN OHMS, 0.1OH, IS UNLESS OTHERWISE SPECIFIED.
 - ALL CAPACITORS ARE IN MICROFARADS UNLESS OTHERWISE SPECIFIED.
 - ALL DIODES ARE 1N4148 UNLESS OTHERWISE SPECIFIED.
 - JUMPERS ARE SHOWN IN FACTORY SET POSITIONS.
 - THIS SCHEMATIC APPLIES TO: PRINTED WIRING BOARD 102103-1 PRINTED WIRING ASSEMBLY 102104-1

LAST USED	NOT USED
C245	2-99, 145-199
D200	2-99, 101-199
J200	1-99, 101-199
P200	2-99, 101-199
Q200	1-99, 101-199
R418	1-99, 137, 138, 219-298, R337, R338
S200	1-99, 110-199
T201	1-99, 102-199
U205	3-99, 106-199
Z203	1-99, 104-199



CROWN INTERNATIONAL, INC.
1718 WEST HISHAWAKA ROAD ELKHART, IN. 46517 PHONE (219) 294-5000

SCHEM, PIP-BP

PRINTS TO	DRAWN	KLW	04-01-97	APPROVED BY:	DO NOT SCALE PRINT
G	CHECKED	ME			SUPERSEDES J0712-0
	SCALE	NONE	EE		E.C.N.
	PROJ #	MD355PO	PE	3/4/97	C.P.N. SHEET 1 OF 2
	NEXT ASSEMBLY				102102